

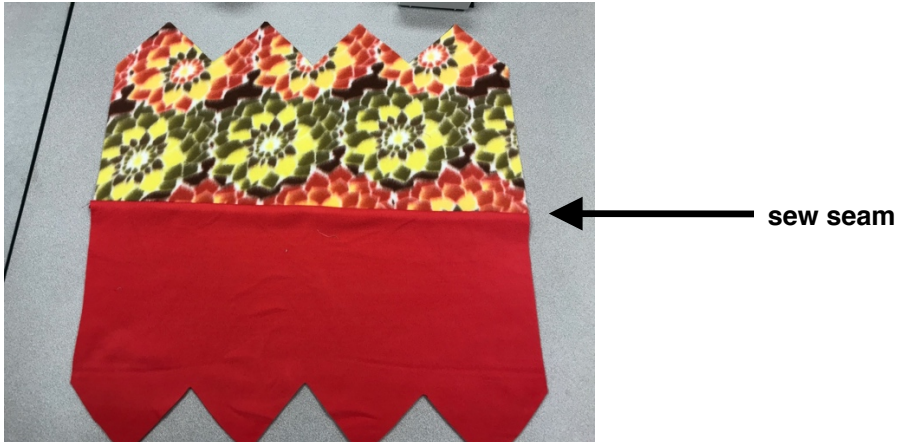
Each kit contains two sections



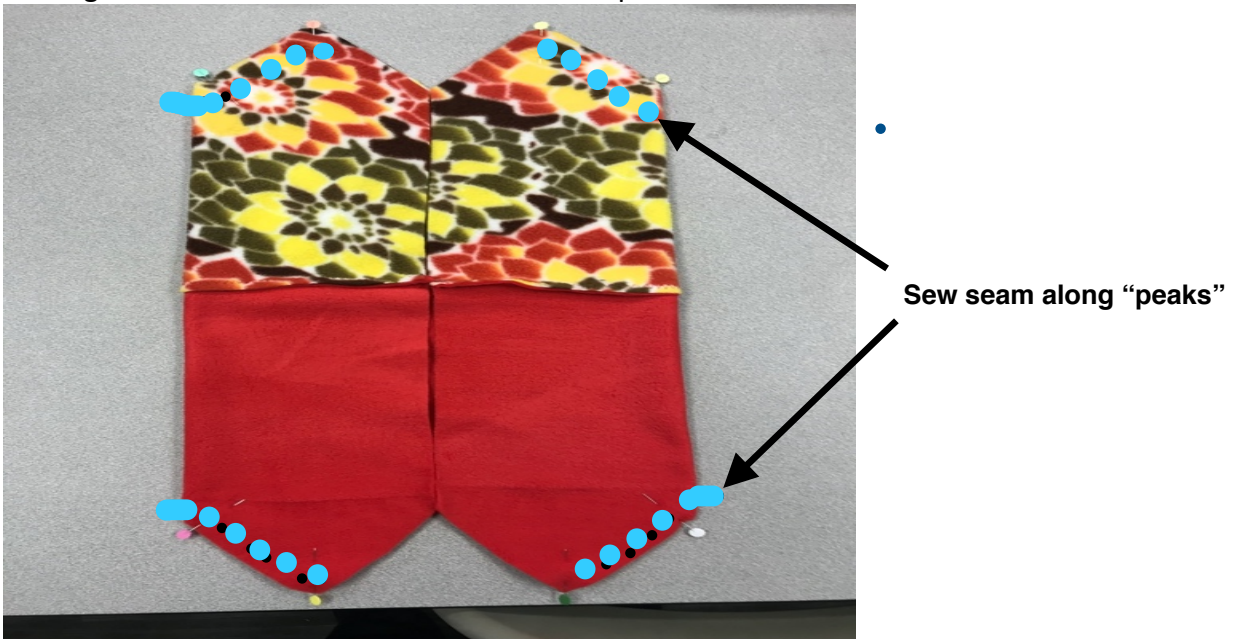
Lay two section out matching long edges



Sew two main sections together along the long straight side (see arrow)  
Place ride side up

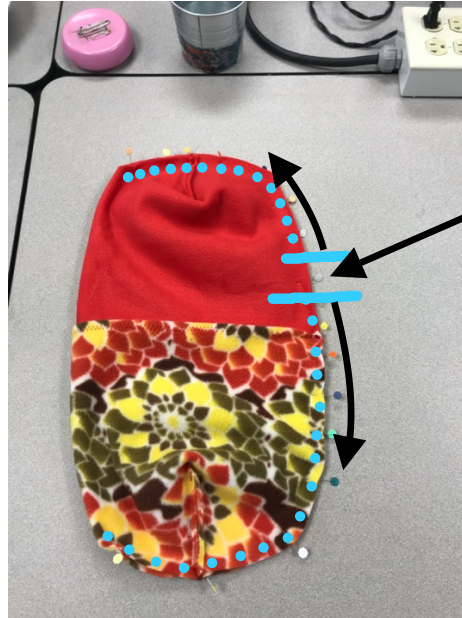


Fold right and left sides to the center and sew "peaks"



Sew last seam leaving a small opening to turn cap right side out- this will be hand sewn closed after inverting cap. Start at lower side of the "peak" on one side, come up over peak and down side

match peak seam



Leave opening for turning cap

Opening for turning cap



Turn cap right side out and hand stitch opening closed



Hand stitch opening closed

